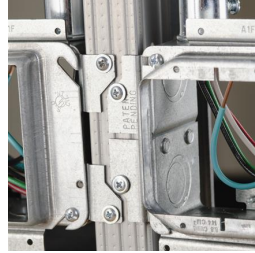
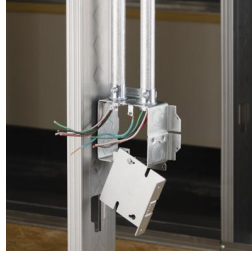
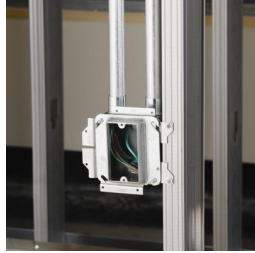
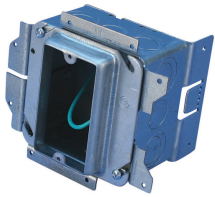
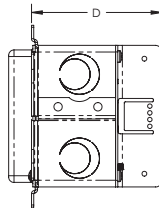
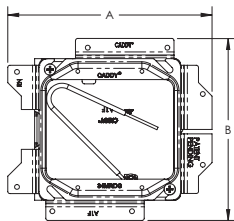
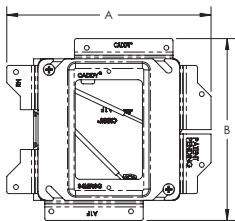


CADDY ALL-IN-ONE Stud-Mounted With Removable Mud Ring – A15F1G



- Removable mud ring provides front access to the interior of the box
- Box remains fixed in place when mud ring is removed
- Includes multiple knockouts on each side of the box
- Assemblies keyed for precise alignment when installed on both sides of a stud
- Made in the USA



Part Number	A15F1G
Material	Steel
Finish	Pregalvanized
Knockout Sizes	(8) 1/2"; 3/4"
Gang	1
Ground Wire Included	Yes
Back Plate Pre-assembled	Yes
Box Volume	32.8 in ³
Drywall Thickness	5/8"
Depth (D)	3 5/8"
A	5 3/4"
B	5 1/8"
Certifications	cULus
Standard Packaging Quantity	20 pc
UPC	78285671953
EAN-13	8711893152166

Ground wire pigtail is 8".



LEFFELECTRIC
www.leffelectric.com

Headquarters | 4700 Spring Rd, Brooklyn Hts, OH 44131 | 216.432.3000

Akron 330.379.9800 Elyria 440.324.5483 Mentor 440.946.5448 Strongsville 440.572.8188 Warren 330.372.3344 Warrensville Hts 216.591.0050 Youngstown 330.799.1366

